



# Comfort Brand Uniform Collection

September 2019

# Comfort Approved Uniform Collection

- **Front of House Collection**
  - Approved Polo Options ..... 4-5
  - Approved Dress Shirt Options ..... 6-11
  - Approved Breakfast Apron Options ..... 12
  - Approved Maintenance ..... 13
  - Approved Pants/Skirt Options ..... 14
  - Optional Approved Suiting ..... 15
  - Optional Approved Second Layers ..... 16-17
- **Back of House Collection**
  - Approved Women’s Scrub Options ..... 19-21
  - Approved Men’s Scrub Options ..... 22
  - Approved Unisex Scrub Options ..... 23-24
  - Optional Approved Under Layers ..... 25
- **Nametag**
  - Approved Nametag ..... 27
- **Uniform & Nametag Guidance**
  - Uniforms Style Guidance ..... 29-30
  - Uniform Style Guide Examples ..... 31

# Front of House

Approved Uniform Collection

# Front of House – Polo Option #1



**Women's Fit**

**Men's Fit**

**Available to all Front of House Departments, including:** Front Desk, Breakfast, Shuttle Driver/Valet, Maintenance, Houseperson

**Color:** Navy

**Style:** Silk Touch™ Performance Polo

**Size availability:**

- Men's Fit XS – 4XL
- Women's Fit XS – 4XL

**Pant Suggestion:** Pair with Grey, Khaki, or Tan Pants

## Front of House – Polo Option #2



**Women's Fit**

**Men's Fit**

**Available to all Front of House Departments, including:** Front Desk, Breakfast, Shuttle Driver/Valet, Maintenance, Houseperson

**Color:** Navy

**Style:** Tech Pique Polo

**Size availability:**

- Men's Fit XS – 4XL
- Women's Fit XS – 4XL

**Pant Suggestion:** Pair with Grey, Khaki, or Tan Pants

# Front of House – Dress Shirt Option #1



**Women's Fit**

**Men's Fit**

**Available to all Front of House Departments, including:** Front Desk, Breakfast, Shuttle Driver/Valet, Maintenance, Houseperson

**Color:** Light Blue

**Style:** Van Heusen - Long Sleeve Oxford Shirt

**Size availability:**

- Men's Fit S – 4XL
- Women's Fit S – 3XL

**Pant Suggestion:** Pair with Dark Navy, Grey, Black, Khaki, or Tan Pants

## Front of House – Dress Shirt Option #2



**Available to all Front of House Departments, including:** Front Desk, Breakfast, Shuttle Driver/Valet, Maintenance, Houseperson

**Color:** Light Blue

**Style:** Van Heusen - Ultimate Non-Iron Shirt

**Size availability:**

- Men's Fit S – 3XL
- Women's Fit S – 3XL

**Pant Suggestion:** Pair with Dark Navy, Grey, Black, Khaki, or Tan Pants

# Front of House – Dress Shirt Option #3



**Women's Fit**

**Men's Fit**

**Available to all Front of House Departments, including:** Front Desk, Breakfast, Shuttle Driver/Valet, Maintenance, Houseperson

**Color:** Dark Navy

**Style:** Devon & Jones CrownLux Performance™ Stretch Shirt

**Size availability:**

- Men's Fit S – 4XL
- Women's Fit XS – 3XL

**Pant Suggestion:** Pair with Grey, Khaki, or Tan Pants



# Front of House – Dress Shirt Option #4



**Navy**

**White**

**Available to all Front of House Departments, including:** Front Desk, Breakfast, Shuttle Driver/Valet, Maintenance, Houseperson

**Color:** Dark Navy

**Style:** Devon & Jones Ladies' Perfect Fit™ 3/4-Sleeve Stretch Poplin Blouse

**Size availability:**

- Women's Fit XS – 3XL

**Pant Suggestion:**

- Pair Navy with Grey, Khaki, or Tan Pants
- Pair White with Dark Navy, Grey, Black, Khaki, or Tan Pants

# Front of House – Women’s Dress Shirt Option #5



**Women’s Fit**

**Available to all Front of House Departments, including:** Front Desk, Breakfast, Shuttle Driver/Valet, Maintenance, Houseperson

**Color:** White

**Style:** Ladies Short Sleeve SuperPro™ Oxford Shirt

**Size availability:**

- Women’s Fit XS – 4XL

**Pant Suggestion:** Pair with Dark Navy, Grey, Black, Khaki, or Tan Pants

# Front of House – Men’s Dress Shirt Option #5



**Men’s Fit**

**Available to all Front of House Departments, including:** Front Desk, Breakfast, Shuttle Driver/Valet, Maintenance, Houseperson

**Color:** Navy/White (Checkered)

**Style:** Devon & Jones CrownLux Performance™ Men's Micro Windowpane Shirt

**Size availability:**

- Men’s Fit S – 4XL

**Pant Suggestion:** Pair with Dark Navy, Grey, Black, Khaki, or Tan Pants

# Front of House – Breakfast Apron Options



**Full-Length Fit**

**Medium Fit**

**Available to all Breakfast Ambassadors**  
(and, any associates assisting with breakfast preparation/service)

**Color:** Navy

**Style:** Body Apron with Pockets

**Size availability:**

- Full-Length Fit 22"W x 30"L
- Medium Fit 22"W x 24"L

**Pant Suggestion:** Pair with Grey, Khaki, or Tan Pants

**Shirt Suggestion:** Pair with Light Blue or White approved shirts

# Front of House – Maintenance Top Options



**Short-Sleeve**



**Long-Sleeve**

**Available to all Maintenance Team Members**

**Color:** Navy

**Style:** Red Kap Industrial Work Shirt

**Size availability:**

- Short-Sleeve S – 6XL
- Long-Sleeve Fit S – 6XL

**Pant Suggestion:** Pair with Grey, Khaki, or Tan Pants

# Front of House – All Pants/Skirts



**Available to all Front of House Departments, including:** Front Desk, Breakfast, Shuttle Driver/Valet, Maintenance, Houseperson

**Color:** Pants/Skirts must be within professional color spectrum

- Dark Navy, Grey, Black, Khaki, Tan (shown on left)

**Style:**

- Pants must be full length
- Skirts must be Knee-Length or Longer
- If pants/skirts are patterned, the pattern must be professional

**Suggestion:**

- Navy tops should not be worn with Navy or Black pants

*Pants/Skirts may be purchased outside the Qualified Vendor program*

# Front of House – Optional Suiting



**Available to Front of House Departments, including:  
Front Desk & Shuttle Driver/Valet**

## **Tailored Suiting / Suit Vests:**

- The embroidered logo element is not displayed on the suit jacket or suit vest.
- The top/shirt worn underneath the suit jacket and/or suit vest must be an approved top/shirt from the uniform collection (with the embroidered logo).
- The suit vest may not be worn without a matching color suit jacket overtop.
- If suit jackets or suit vests are worn, the suit pants/skirts must match in color/style.
- If suit jackets or suit vests are worn, they must be within professional color spectrum (Dark Navy, Grey, Black, Khaki, Tan).

*Suit jackets, suit vests, and suit pants/skirts may be purchased outside the Qualified Vendor program*

# Front of House – Optional Second Layers (Grey)



Available to all Front of House Departments, including: Front Desk, Breakfast, Shuttle Driver/Valet, Maintenance, Houseperson

Women's Fit: **W**    Men's Fit: **M**    Unisex Fit: **U**



# Front of House – Optional Second Layers (Navy)

W



W



W



W



M



M



M



Available to all Front of House Departments, including: Front Desk, Breakfast, Shuttle Driver/Valet, Maintenance, Houseperson

Women's Fit: **W** Men's Fit: **M**

# Back of House

Approved Uniform Collection

# Back of House – Women’s Housekeeping Option #1



**Women’s Fit**

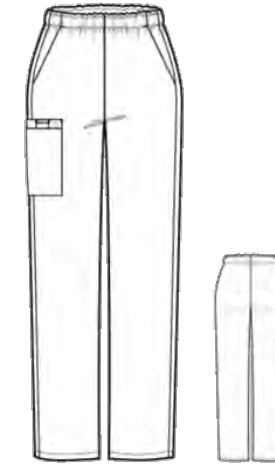


**Color:** Light Navy  
**Style:** V-Neck Top (101)  
**Size availability:** XXS – 5XL

**Available to all Back of House Departments, including:** Housekeeping & Laundry



**Women’s Fit**



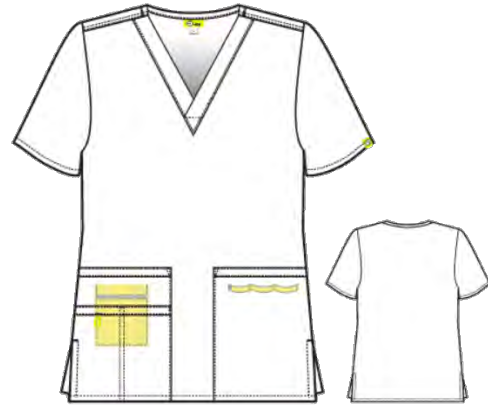
**Color:** Light Navy  
**Style:** Pull-On Cargo (501)  
**Size availability:** XXS – 5XL

**Available to all Back of House Departments, including:** Housekeeping & Laundry

# Back of House – Women’s Housekeeping Option #2



**Women’s Fit**

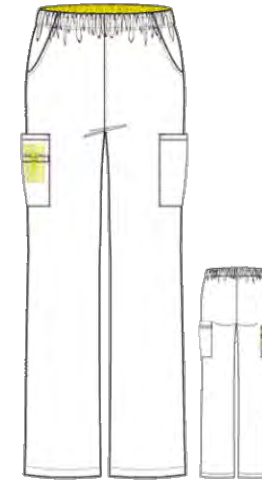


**Color:** Dark Navy  
**Style:** The Bravo (6016)  
**Size availability:** XXS – 5XL

**Available to all Back of House Departments, including:** Housekeeping & Laundry



**Women’s Fit**



**Color:** Dark Navy  
**Style:** The Quebec (5016)  
**Size availability:** XXS – 5XL

*Match w/ The Lima OR The Bravo*

**Available to all Back of House Departments, including:** Housekeeping & Laundry

# Back of House – Women’s Housekeeping Option #3



**Women’s Fit**

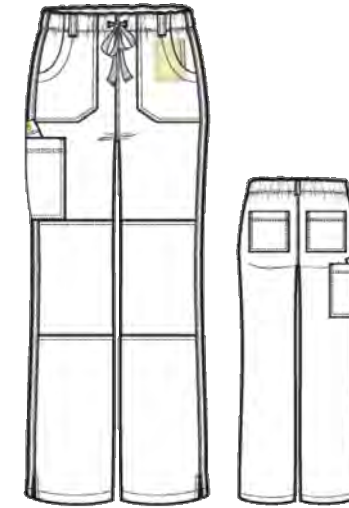


**Color:** Dark Navy  
**Style:** The Lima (6096)  
**Size availability:** XS – 3XL

**Available to all Back of House Departments, including:** Housekeeping & Laundry



**Women’s Fit**



**Color:** Dark Navy  
**Style:** The Tango (5046)  
**Size availability:** XXS – 3XL

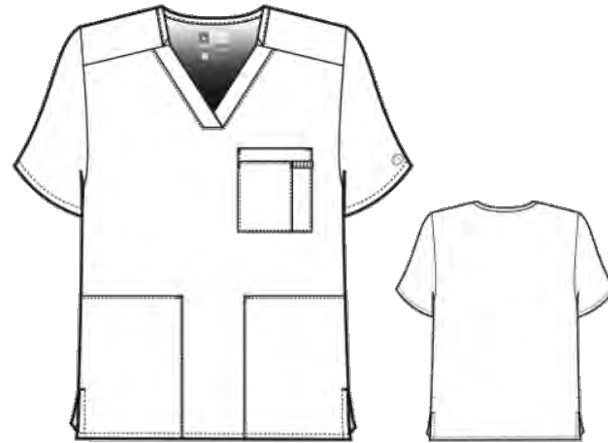
*Match w/ The Lima OR The Bravo*

**Available to all Back of House Departments, including:** Housekeeping & Laundry

# Back of House – Men’s Housekeeping Option #1



**Men’s Fit**



**Color:** Light Navy

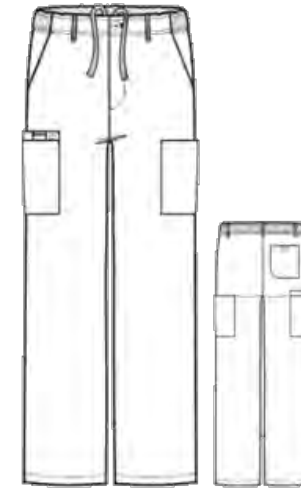
**Style:** Multi-Pocket Top (103)

**Size availability:** XS – 5XL

**Available to all Back of House Departments, including:  
Housekeeping & Laundry**



**Men’s Fit**



**Color:** Light Navy

**Style:** Cargo Pant (503)

**Size availability:** XS – 5XL

**Available to all Back of House Departments, including:  
Housekeeping & Laundry**

# Back of House – Unisex Housekeeping Option #1



**Unisex Fit**

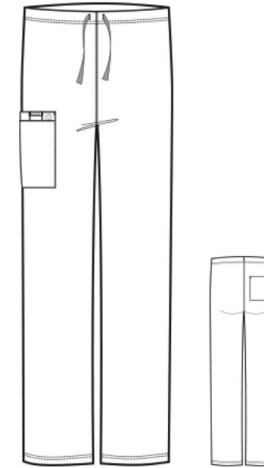


**Color:** Light Navy  
**Style:** V-Neck Top (100)  
**Size availability:** XXS – 5XL

**Available to all Back of House Departments, including:**  
Housekeeping & Laundry



**Unisex Fit**



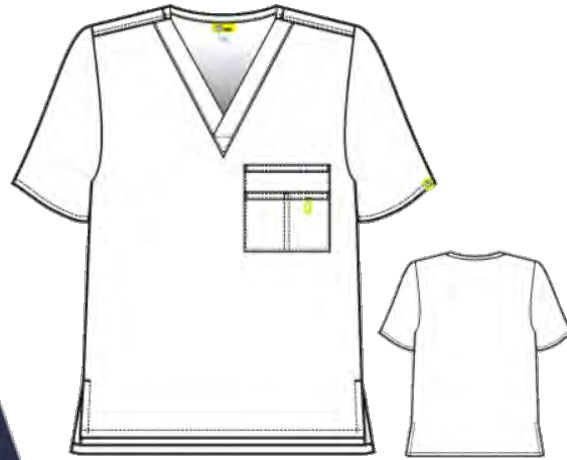
**Color:** Light Navy  
**Style:** Drawstring Cargo Pant (500)  
**Size availability:** XXS – 5XL

**Available to all Back of House Departments, including:**  
Housekeeping & Laundry

# Back of House – Unisex Housekeeping Option #2



**Unisex Fit**

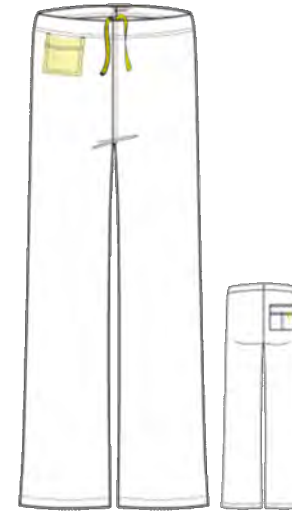


**Color:** Dark Navy  
**Style:** The Alpha (6006)  
**Size availability:** XS – 5XL

**Available to all Back of House Departments, including:**  
Housekeeping & Laundry



**Unisex Fit**

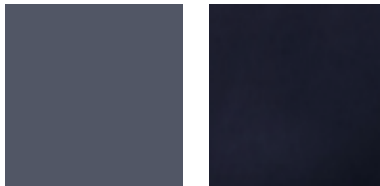


**Color:** Dark Navy  
**Style:** The Papa (5006)  
**Size availability:** XS – 5XL

**Available to all Back of House Departments, including:**  
Housekeeping & Laundry



# Back of House – Optional Under Layer



**Available to all Back of House Departments, including:**  
Housekeeping & Laundry

**Color:** Solid Navy & Pewter

**Style:** Long Sleeve Tee

**Size availability:** XXS – 5XL

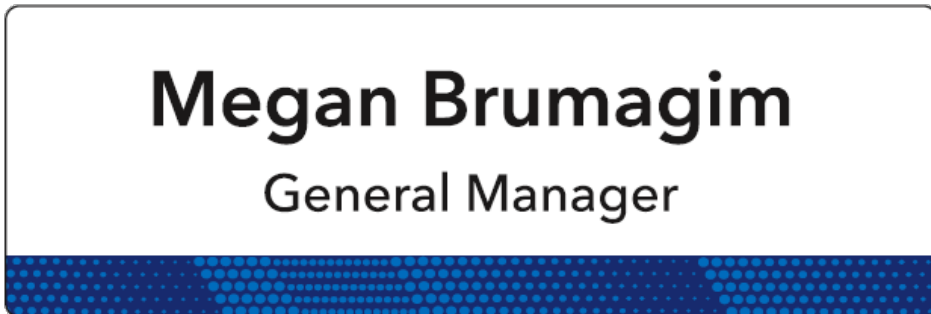
*Full-length under layer shirt may be purchased outside the  
Qualified Vendor program*

*If a long-sleeve under layer shirt is worn, it must be solid  
(no pattern or graphics) & grey or navy in color.*

# Nametags

Approved Uniform Collection

## Nametags **All Management & Team Members *must* wear an approved nametag**



Both, the Blue and Orange, designs are approved.

Each property is given the flexibility to select which color they prefer to use on property (one or both).

The approved nametags were purposefully designed without a logo.

### Nametag Display:

- The nametag must be clearly visible at all times. The nametag should be worn on the upper left chest of the uniform garment. The nametag should not cover the embroidery on the dress shirt.

### Name & Title Parameters:

- First Name is Required for all Personnel
- Last Name is Required for all Management Personnel
- Last Name is Optional for all Non-Management Personnel
- Title is Required for all Management Personnel
- Title is Optional for all Non-Management Personnel

### Nametag Parameters:

- Nametag must be digitally printed or labeled per specification
  - Digitally Printed Nametag: Printed via Qualified Vendor
  - Labeled Nametag: Printed on a non-stick, transparent label with clear protective plastic lens cover
- Nametag must meet size/dimension and design standards per specifications
  - 1" X 3" Size
  - Custom Designed (*blue and orange designs available*)
- Each property has the option to select between the Blue and Orange nametag design. Both designs are approved.

# Guidance & Examples

Approved Uniform Collection

# Approved Uniform Collection – Guidance

## REQUIRED:

- This NEW Uniform & Nametag Collection must be implemented by 01/01/2021.
- An approved nametag must be worn and clearly visible by all Team Members and Managers.
- An approved uniform must be worn by all Team Members (Managers not required to wear uniform).
- Approved, specified uniform tops must be worn at all time by Front of House Team Members. (Front Desk, Breakfast, Maintenance)
- Approved style/color of pants/skirts must be worn at all time by Front of House Team Members. (Front Desk, Breakfast, Maintenance)
- Approved, specified uniform tops and pants must be worn at all time by Back of House Team Members (Housekeeping/Laundry)

# Approved Uniform Collection – Guidance

## SUGGESTED:

- The nametag should be worn on the upper left chest of the uniform garment and should not cover the embroidery.
- Front of House team members may wear approved, specified second/outer layers.
- Front of House Team Members should not wear a dark navy top with black or navy pants.
- All Men's Front of House Dress Shirts and Polos should be worn tucked in.
- Men's polos should be worn with at least the bottom button fastened.
- Women's polos should be worn with all buttons fastened, when buttons are present.
- Men's dress shirts should be worn with all bottom buttons fastened, with availability to leave the top two buttons unfastened.
- Women's dress shirts should be worn with all bottom buttons fastened, with availability to leave the top two buttons unfastened.
- Back of House team members may wear approved first/under layers (long-sleeve shirt option).
- If Housekeeping Team Members elect to wear skirts, the skirts must be minimally knee-length, black color skirts.
- All garments should fit properly and be clean, pressed (as applicable) and in good condition (i.e., no holes, fraying, stains, discoloration, etc.).
- Team members should present a professional appearance (neat, clean and well groomed).
- Jeans and Yoga Pants are not acceptable.
- Solid white short-sleeve t-shirts (no prints or graphics) may be worn under all uniform tops.
- Shoes should be solid, professional color, slip-resistant, closed heel and closed toe style dress shoe.
- If worn, belts should be in a solid, professional color, and match the color of pants or shoes.

# Approved Uniform Collection – Examples



# Thank you

For all sizing and purchasing questions, please contact the Approved Qualified Vendors

For any remainder questions, please contact [BrandPrograms@choicehotels.com](mailto:BrandPrograms@choicehotels.com)